



# University of Pennsylvania Career Services

## School of Engineering & Applied Science Five Year Alumni Survey

### Classes of 2001 and 2002

32.31% of the graduates responded

Class	# of Respondents	% Males	% Females
Seniors	201	69.8%	30.2%

	Average Yearly Salary	Salary Range
<b>Overall</b>	\$89,929	\$22,000 – 260,000
<b>Male</b>	\$95,068	\$42,000 – 260,000
<b>Female</b>	\$75,721	\$22,000 – 127,000

Prepared by:

Rosette Pyne  
Senior  
Associate Director  
&  
Leon Chou,  
James Silverstein  
Assistants  
2008

#### Average Salary by Degree

Degree	Surveys with Salaries	Male Average	Female Average
BAS	18	\$101,785	\$68,200
BSE	105	\$95,391	\$77,017

#### Table of Contents

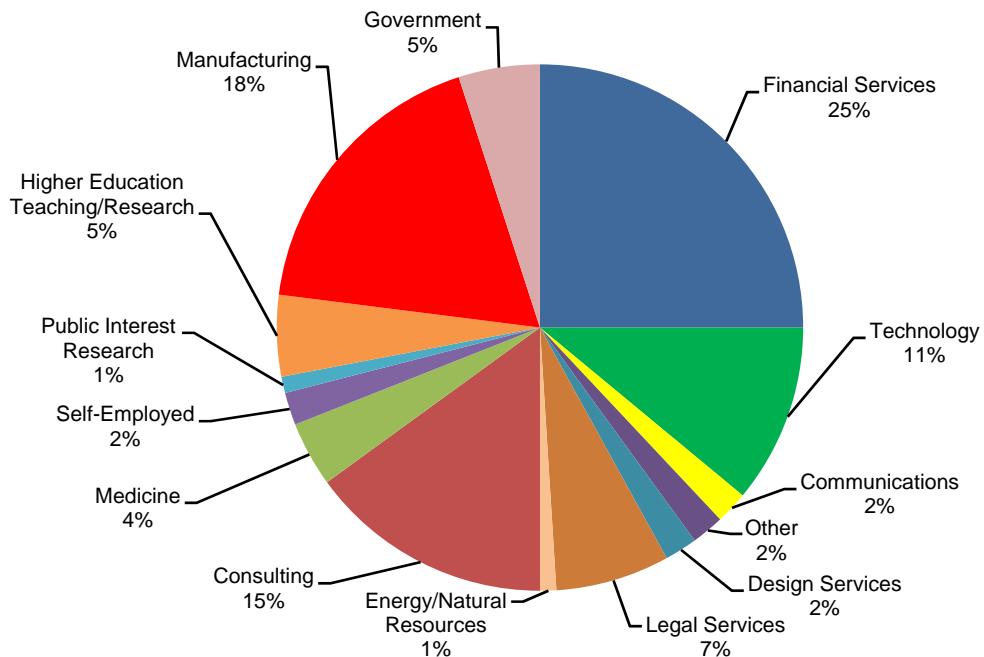
	Page		Page
Salaries by Major	2	Geographic Distribution of Jobs	4
Industries Employing SEAS Alumni	2	Major Career Change	4
Number of Jobs Held	3	Career Advice for Current Students	4-5
Number of Employers	3	Advanced Degrees Pursued	5
Hours Worked Per Week	3	Fields of Graduate Study	5
Years in Current Positions	3	Graduate Schools Attended by Major	6-8
Time Taken Off	3		

### Salary by Major

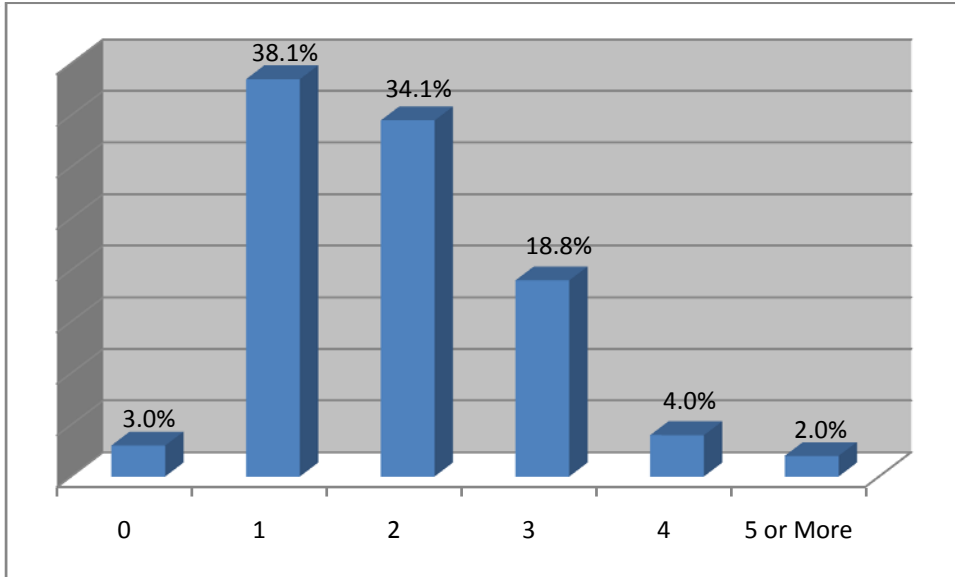
Major	Average Salary	Range	
Applied Science			
Applied Science	\$90,667	\$22,000	\$125,000
Biomedical Science	\$72,842	\$48,000	\$160,000
Computer Science	\$84,000	\$50,000	\$112,000
Digital Media	\$82,667	\$70,000	\$90,000
Individualized	\$125,000	\$80,000	\$170,000
Bioengineering	\$76,438	\$45,000	\$110,000
Chemical Engineering	\$81,267	\$42,000	\$150,000
Civil Engineering	\$69,517	\$52,000	\$122,000
Computer Science & Telecom. Eng.	\$65,869	\$24,000	\$100,000
Computer Science & Engineering	\$103,900	\$50,000	\$160,000
Digital Media Design	*		
Electrical Engineering	\$90,846	\$63,000	\$130,000
Materials Science & Engineering	\$92,250	\$50,000	\$185,000
Mechanical Eng. & Applied Mechanics	\$76,750	\$68,000	\$85,000
Systems Science & Engineering	\$98,192	\$50,000	\$260,000

\*Single salaries are not reported.

### Industries Employing SEAS Alumni



**Number of Jobs Held**



**Number of Employers Post Graduation**

Demographic	Average Number of Employers
Male	1.90
Female	2.03

**Hours Worked Per Week**

Demographic	Average # of Hours Worked Per Week
Male	52.83
Female	51.90

**Years in Current Position**

Demographic	Average Years in Current Position
Male	2.05
Female	2.11

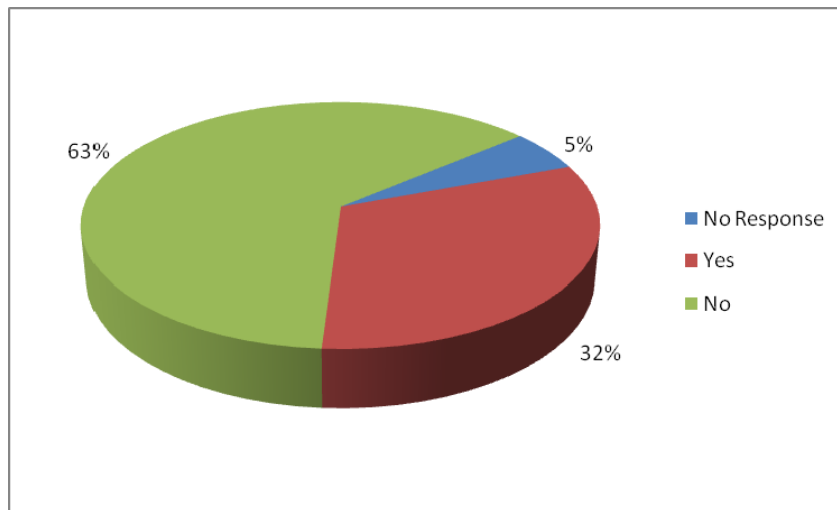
**Time Taken Off After Graduation**

Demographic	Yes	No	No Response
Male	15.9%	49.5%	4.4%
Female	11.4%	17.3%	1.5%

### Geographic Distribution of Jobs

<u>Area</u>	<u>Number</u>	<u>Percent</u>
United States		
Northeast	12	6.3
Mid-Atlantic	84	51.0
Southeast	11	6.6
Midwest	10	6.1
West	29	16.6
Northwest	4	2.4
Southwest	7	4.8
Abroad	8	6.2
Total:	165	100%

### Major Career Change



### Career Advice

Alumni were asked what advice they would give to students. The following is a sampling of their direct quotes:

- Engineering provides an excellent base to pursue a career in many different fields. Stick with it, even though the courses are hard.
- Focus on applicable skills, learn current software, techniques and how to apply them, not just theory. Be persistent in understanding the course material!
- Don't let your major or training limit your possible career choices. There are more paths to a destination than you may believe. Ask around and you'll be surprised how many different backgrounds exist within a profession!
- Define your objective. Gain as much experience as possible toward that end. Reevaluate at intervals and adjust. Take many small steps fast. And finally, network and find mentors. An experienced hand is worth its weight in gold.
- Explore job options through internships, pursue any entrepreneurial interests while in school and travel whenever possible.
- Find a job that you would do for free.
- Find and pursue opportunities in your own interests rather than what your peers all seem to be interested in.
- Get involved in undergraduate research.
- Go on at least one summer internship with industry or academics.

**Career Advice (continued)**

- Penn was great! Network while you are there.
- Take the EIT while in school.
- Definitely pursue a Masters degree if you want to stay in engineering.
- Get comfortable with public speaking before graduation in order to make your professional life much easier!
- Your first job doesn't dictate your path, so don't stress out too much if it's not perfect for you.
- When career hunting, look beyond your typical comfort zone. Since most first jobs last 2 years there will be time to find something more comfortable and enjoyable.
- Make sure you try lots of things so you find something you love! And don't be afraid to try the unknown.
- Get involved with Penn Recruiting when you join your employer...it's a great way to stay connected with the school and current students!
- Get best grades possible freshman year. It's hard to pull them up over time.

**Advance Degrees Pursued:** 62.7% of the respondents indicated they attained advanced degrees.

Major	Certificate Post Grad	Masters	MBA	MD	JD	EdD	PhD	Multiple Graduate Degrees
Applied Science		2	1			1		
AS Biomedical Science				4	2			MPH/MD
AS Computer & Cognitive Science		1						
AS Computer Science		1		2	1		1	
AS Digital Media		1						
AS Individualized					1		1	
AS Systems			2		1			
Bioengineering		1	1	2	1		8	
Chemical Engineering	1	1	4	2			3	MEM/MBA
Civil Engineering		4						MSE/MBA
Computer & Telecommunications Engineering			1				2	MSE/MBA (2)
Computer Science and Engineering		8	7		2		2	MS/MSE, MSE/MBA, MSE/PhD
Digital Media Design		1					1	
Electrical Engineering		4	5		2			MSE/PhD
Materials Science Engineering		3			1		5	
Mechanical Engineering and Applied Mechanics		1						
Systems Engineering	1	7	11		1			MS/MBA, MA/PhD
Management and Technology*		5	4					
Liberal Arts and Technology*			1					

\*Students graduating from dual-degree programs are counted in their individual engineering major and in these fields.

## **Graduate Schools Attended by Undergraduate Major**

### **Applied Science**

Columbia University, MBA  
Harvard University, MS  
Montana State University, EdD  
Stanford University, MS

### **Applied Science - Biomedical Science**

Columbia University, MPH, DMD  
George Washington University, JD (2)  
Yeshiva University, MD  
University of Pennsylvania, MD  
Temple University, JD  
University of Toronto, MD

### **Applied Science - Computer & Cognitive Science**

Georgetown University, MS

### **Applied Science – Computer Science**

Boston University, PhD  
Georgetown, JD  
Jefferson Medical College, MD  
Mt. Sinai School of Medicine, MD  
Polytechnic University, MSE

### **Applied Science – Digital Media**

Carnegie Mellon University, MS

### **Applied Science - Individualized**

University of Pennsylvania, PhD  
University of Virginia, JD

### **Applied Science - Systems**

Columbia University, MBA  
Pepperdine University, JD  
INSEAD, MBA

### **Bioengineering**

Boston University, PhD (3)  
Case Western Reserve University, PhD  
Duke University, PhD  
Massachusetts Institute of Technology, MBA  
Northwestern University, MS  
State University of New York, MD  
University of California, Berkeley/UCSF, PhD  
University of Connecticut, MD  
University of Miami, JD  
University of Pennsylvania, PhD  
Washington University, PhD

### **Chemical Engineering**

Cambridge University, MSE  
Massachusetts Institute of Technology, PhD, MBA  
New York University, Certificate  
Northwestern University, MBA, MEM  
Temple University, MD

**Chemical Engineering (continued)**

University of California, Berkeley, PhD  
University of Michigan, MBA  
University of Notre Dame, PhD  
University of Pennsylvania, MBA (2)  
University of Texas, Southwestern, MD

**Civil Engineering**

Massachusetts Institute of Technology, MS, MSE, MBA  
Northeastern University, MS  
University of Missouri, MS  
University of Pennsylvania, MS

**Computer & Telecommunications Engineering**

Harvard University, MBA  
Massachusetts Institute of Technology, PhD  
University of California, Berkeley, MBA  
University of Chicago, MBA  
University of Pennsylvania, MSE (2)  
University of Texas, Austin, MS

**Computer Science & Engineering**

Brooklyn Law School, JD  
Carnegie Mellon University, MBA, PhD  
Columbia University, MBA  
Cornell University, MS  
Fordham University, JD  
Harvard University, MS, PhD  
Massachusetts Institute of Technology, PhD  
National University of Singapore, MS  
New York University, MBA (2)  
Northwestern University, MBA (2)  
Stanford University, MS (2)  
Teachers College, MA  
University of Colorado, Boulder, PhD  
University of Pennsylvania, MSE (6), MBA

**Digital Media Design**

Stanford University, PhD  
University of Texas, Austin, MS

**Electrical Engineering**

Columbia Business School, MBA (2)  
Drexel University, MSE  
Fordham University, JD  
Stanford University, MBA  
Pierce College, JD  
University of California, Berkeley, MBA  
University of Michigan, MBA  
University of Pennsylvania, MSE (3)  
University of Virginia, MS, PhD

**Materials Science & Engineering**

Fordham University, JD  
George Washington University, MS  
Harvard University, PhD

**Materials Science & Engineering (continued)**

Massachusetts Institute of Technology, PhD (2)

University of California, Los Angeles, MS

University of California, Santa Barbara, PhD

University of Florida, MS

University of Pennsylvania, PhD

**Mechanical Engineering & Applied Mechanics**

John Hopkins University, MS

**Systems Science & Engineering**

Babson College, MBA

Columbia University, MS (2), MBA (2)

Duke University, MBA

Harvard Business School, MBA

Indiana School of Business, Post-Graduate Program

Johns Hopkins University, MS

New York University, MS, MFA, MBA

Northwestern University, MBA (2)

Pennsylvania State University, MSE

Rutgers University, MBA

University of California, San Diego, MSE

University of Chicago, MBA

University of Oxford, MBA

University of Pennsylvania, MA, MSE, MBA, JD, PhD